







## DATA SHEET

-  Emergency Lighting
-  Plug and Play Wiring
-  Ingress Protection - IP65
-  Safety Standards
-  DALI Digital Interface
-  Earth Ground

Extruded powder coated luminaire, utilising the latest in collimated led optical design offers the user a multi-functional lighting solution for low, medium and high bay applications.

Utilising VS M class modules and with task designed optics assures the user of the optimum use of light in a controlled and functional fashion. Providing an IP65 optical solution guarantees excellent component longevity and safety. The 6 module 20000 lumen plus package is controlled using VS advanced Dali driver technology. Located in a separate chamber insures that all components are thermally optimised and driven with in limitations. The Panasonic Sensor suite provides excellent IR, phot cell definition and functional control thus achieving increased energy saving initiatives and site illuminance optimisation.

### LED\* Characteristics

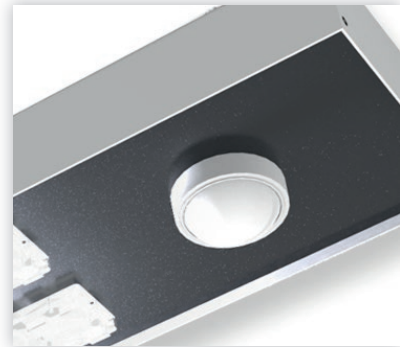
- Light Source: 6 X 16 LED modules VS1
- Colour Temperature: 4000K
- Light Colour: N/A
- Lumen Maintenance: L70/B10
- Symmetry: Various dependent on optic.
- Beam Angle: Various dependent on optic.
- Light Emission: Direct Colomated emission
- UGR viewing along longitudinal luminaire access: 23
- UGR viewing along lateral luminaire access: 21
- MacAdam Ellipses:  $\leq 4$  SDCM

### Application

- Warehouses, Distribution Centres - Chilled and Ambient (Interior Only)



Treax Optica in Warehouse



PIR Detail

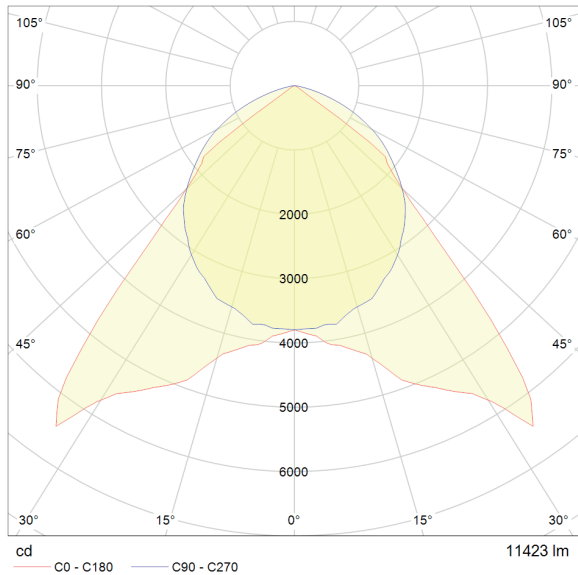
## Construction

- Body: Extruded aluminium
- Paint: RAL 9010 30% Gloss or as Required
- Reflector: N/A
- Door: N/A

## Thermal Management

- Light Source and Driver are Suited to Ensure Optimal Thermal Management

## Photometric Performance



**Net luminous Flux:** 21000lm  
**Luminous Efficacy:** 95.54lm/W  
**Luminous Opening:** 240mmx60mm  
**Colorimetric Details:** CRI (Ra) ≥84  
**Mounting Height:** Optic dependant upto 15m

## Dimensions & Weight

**Length:** 1220mm  
**Width:** 220mm  
**Height:** 100mm  
**Weight:** 10kg

## Electrical

**Voltage:** 220-240 V  
**Current:** 700mA  
**Power:** 220 W  
**Mains Frequency:** 50-60 Hz  
**Power Factor:** 0.97  
**Connectors:** 4-Pole Wago Winsta 770

## Approval

**Protection rating:** IP66  
**Standard:** VDE approved (acc.To EN62031)  
**Certification:** CE  
**Permissible ambient temperature:** -20-50°C

## Service Life

50,000 hours

## Warranty Details

50,000 hours

## Control Gear\*

- Dimmable LED Constant Current Drivers 700 mA / 112 W

## Sensor\*

- Proprietary high bay PIR + LDR\*
- Additional specifications available on request

## Installation

- Simple and secure installation using 2 x M6 eyelets (included) screwed into luminaire hardpoints
- Facilitating a number of suspension systems
- Full installation guide included